

The Leaders in Portable X-Ray Systems

NOVO 10BN / 18BN Bendable Detectors

NOVO DR's first Bendable Detectors are ground breaking in their field. Using NOVO's outstanding technology, they bring a true innovation to the market

NOVO 10BN



NOVO 18BN



Innovative Top of the Line Technology

- Bendable from flat to 6" / 12" diameter
- High resolution: 99 microns, ISO17636-2 Class B from 4mm and upwards
- Thin & Light: Can be positioned in tight places
- Compatible with NOVO's previous generation systems

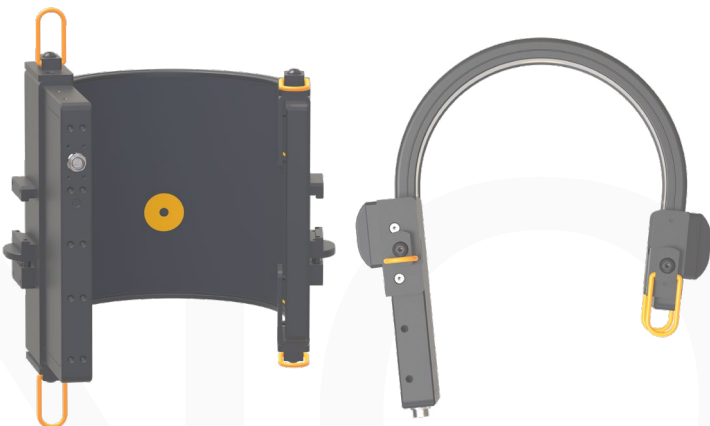
NOVO 10BN Bendable Detector



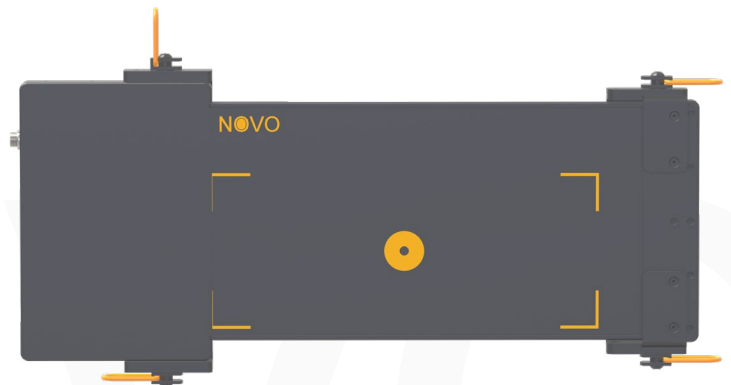
- Bendable from flat to 6" diameter (DN150)
- Thin & Light: Can be positioned in tight places
- High resolution: 99 microns, ISO17636-2 Class B from 4mm and upwards
- Compatible with NOVO's previous generation systems

Can be used in two modes:

Bent:



Flat:

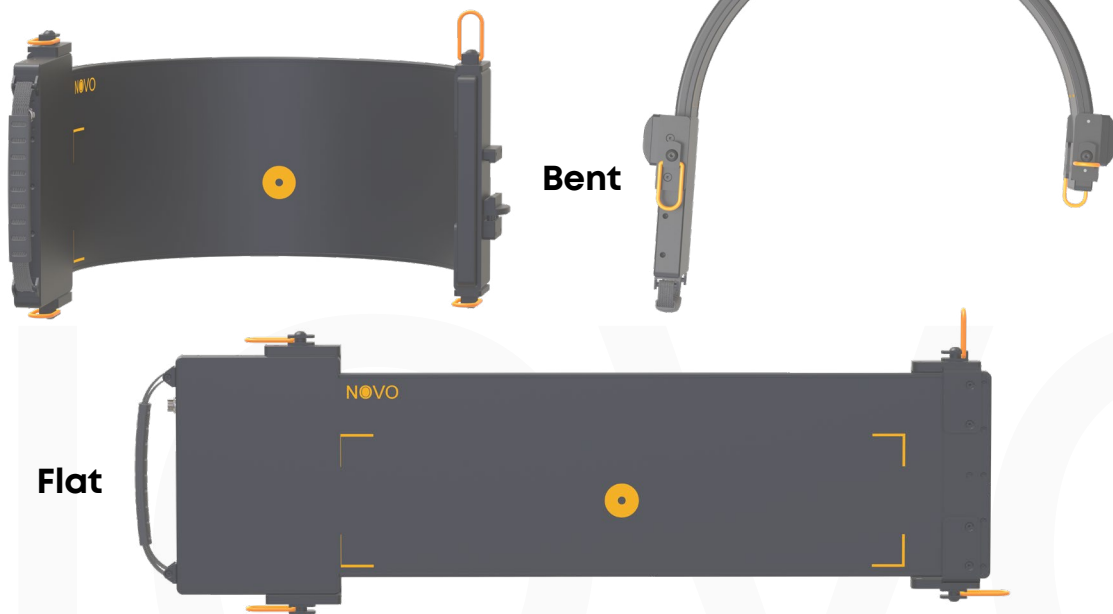


NOVO 18BN Bendable Detector



- Bendable from flat to 12" diameter (DN300)
- Thin & Light: Can be positioned in tight places
- High resolution: 99 microns, ISO17636-2 Class B from 4mm and upwards
- Compatible with NOVO's previous generation systems

Can be used in two modes:

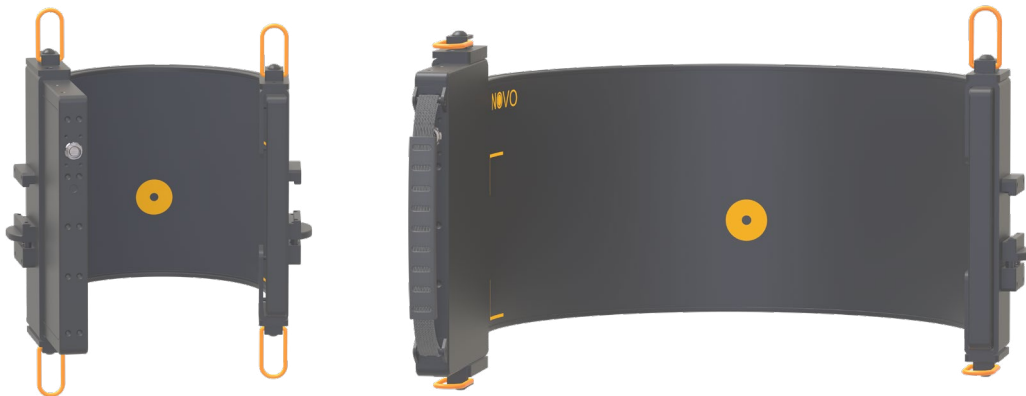


Technical Specifications

Detector Model	NOVO 18BN Bendable Detector	NOVO 10BN Bendable Detector
Pixel size	99 microns	99 microns
Net Weight	Sensor: 3.9 lbs. (1.8kg) Electronics Unit: 2.6 lbs. (1.2kg)	Sensor: 3.5 lbs. (1.6kg) Electronics Unit: 2.6 lbs. (1.2kg)
Load Tolerance	220.5 lbs. (100kg)	220.5 lbs. (100kg)
Detector Imaging Area	16.33" X 3.82" (415mm X 97mm) 4184 X 981 pixels	9.8" X 3.8" (227mm X 98mm) 2299 X 988 pixels
Size	Sensor: 24.42" X 7.2" (620mm X 182mm) Electronics Unit: 9.8" X 7.4" (250mm X 188mm)	Sensor: 17.4" X 7.2" (443mm X 182mm) Electronics Unit: 9.8" X 7.4" (250mm X 188mm)
Drop Test	29.5" (75cm)	29.5" (75cm)
Thickness	Sensor: 0.85" (21.5mm) Electronics Unit: 4.72" (120mm)	Sensor: 0.85" (21.5mm) Electronics Unit: 0.8" (20mm)
Bit Depth	16bit	16bit
Life Span	Over 100K rem*	Over 100K rem*
Bending	From flat to 12" diameter (~300mm)	From flat to 6" diameter (~150mm)

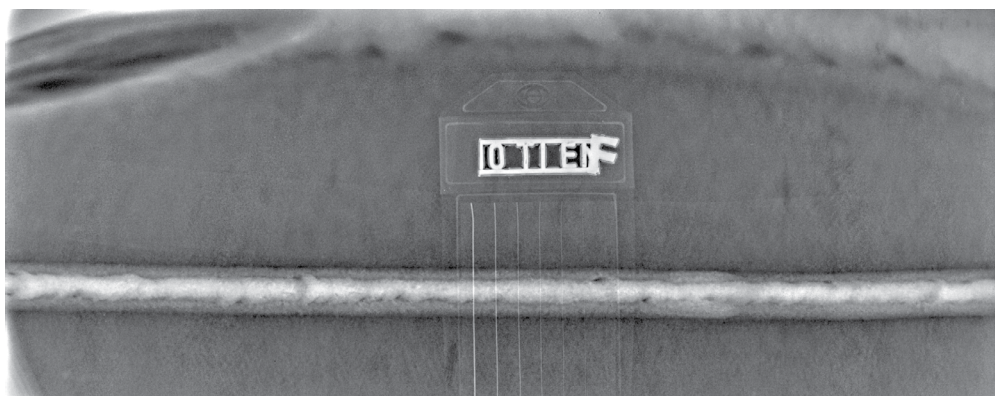
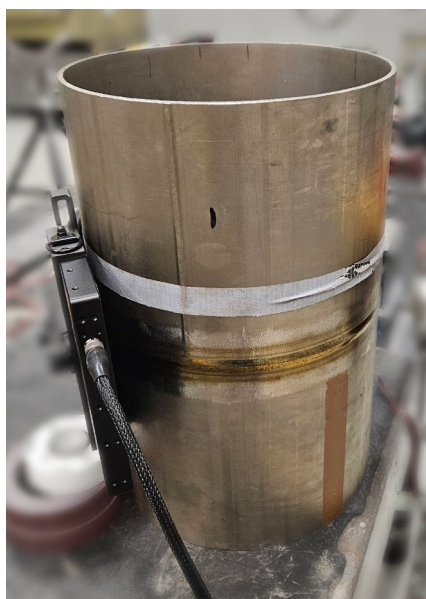
* Over 100K rem of direct exposure on the detector

System includes Proprietary Bendable mount:

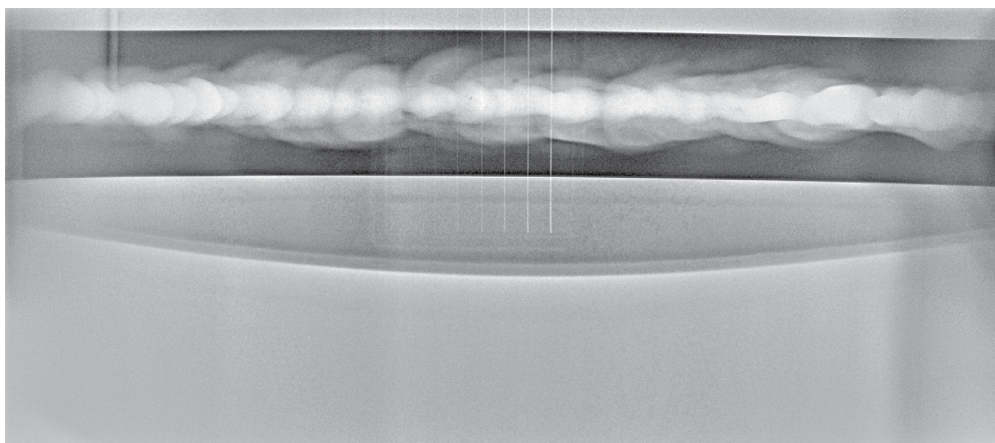


- Saves Set-up time
- Maintains curvature for repeatable positioning
- Prevents over-flexing
- Includes standard Tripod Adaptor
- Additional mounting points (for use with spring cables, straps etc.)

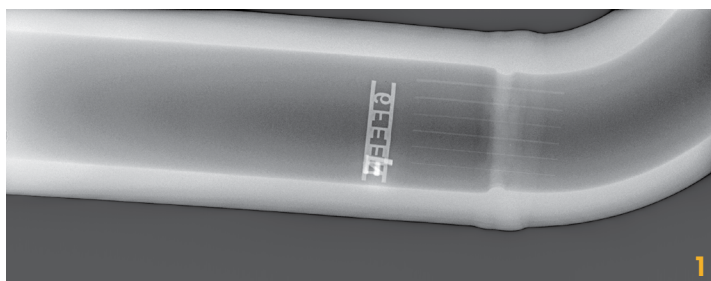
Images



11 inch titanium pipe, 4.2mm wall thickness



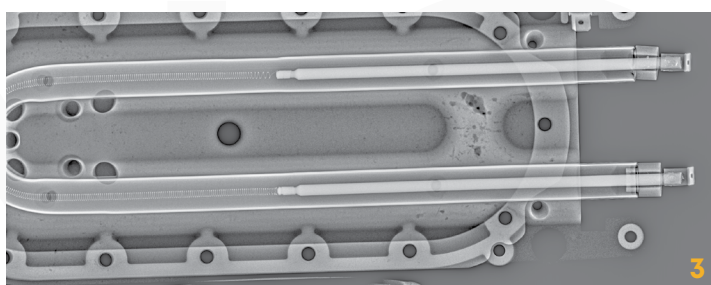
6 inch steel pipe, 6mm wall thickness, shot with YXLON ECO200DS



1



2



3

1. 2 inch pipe, 11mm wall thickness, shot with Ir 192

2. Fuse, shot with XRS4

3. Filament within Casting, Shot with YXLON ECO200DS

Discovery III System



Top of the Line System in a Rugged Pelican Case

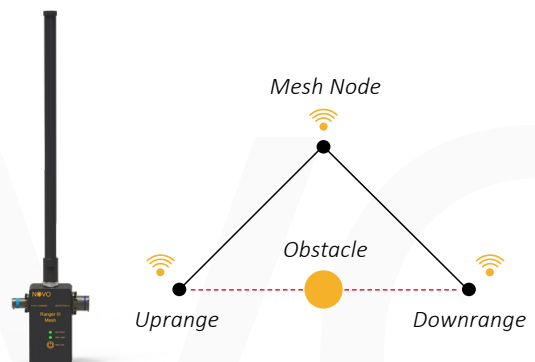
- NOVO 10 BN Bendable Detector
- Wired & wireless operation modes
- 21.5" 1500 NIT Sun-Readable touch tablet
- Super Long Range Wireless Mesh technology
- MIL-DTL 38999 connectors
- Supports multi-tablet control & display
- Includes NOVO Touch Pro full Software package
- Controls & Syncs with Industrial X-Ray Sources



NOVO Wireless Mesh Technology

Unique technology providing unmatched wireless performance:

- Up to 0.6 miles (1000m) LOS between wireless devices; longer range when elevating on tripods - up to 1.8 miles (3km)
- High signal stability in crowded RF environments, such as urban locations and areas with strong electromagnetic fields
- Multiple wireless devices allow for working "around corners", obstacles and underground operations
- Each wireless unit becomes a relay (repeater), which automatically connects and automatically relays wireless signals efficiently
- Multiple Nodes allow for working "around corners", obstacles and subterranean operations





NOVO Touch Pro Software

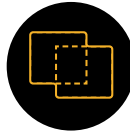
Key Software Features

The NOVO Touch Pro Software is a proprietary software developed in-house to provide the best user experience and functionality.

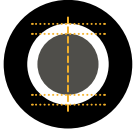


GENIE

One Touch Enhancement

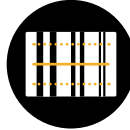


Manual & Automatic Image Stitching



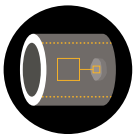
Auto Wall Thickness

Calibration and Measurement



Auto Basic Spatial Resolution

SRb calculator



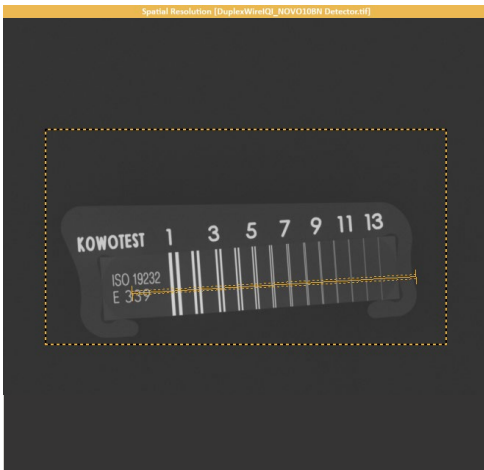
DWT

Double Wall Thickness Technique



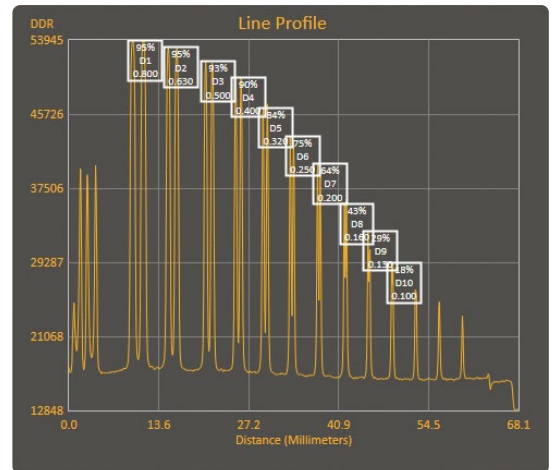
DICONDE Compliant

Auto Basic Spatial Resolution (SRb)



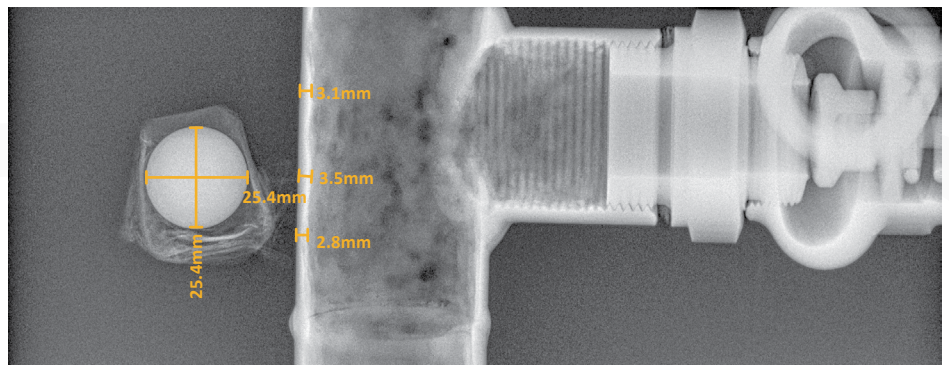
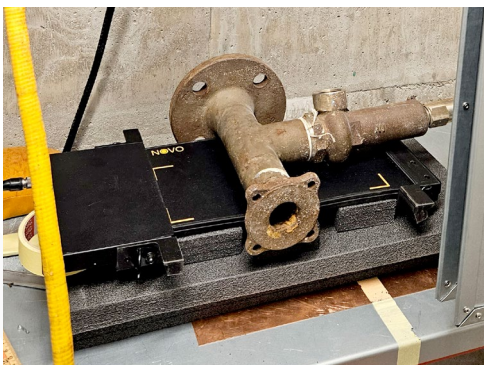
Name	D	R (%)	DDRD
1 D	0.800	95.865	16980.00
2 D	0.630	95.457	17416.64
3 D	0.500	93.533	17216.73
4 D	0.400	90.263	17187.55
5 D	0.320	84.951	17025.82
6 D	0.250	75.123	16866.27
7 D	0.200	64.133	16659.27
8 D	0.160	43.092	16491.27
9 D	0.130	29.812	16378.09
10 D	0.100	18.305	16323.00

Spatial Resolution 0.104 mm
Angle 3.4 degrees



Spatial Resolution Tool - Automatically recognizes & marks the smallest Duplex Wire as well as the angle

Auto Wall Thickness



Auto Wall Thickness Tool - automatically calibrates & Detects the Wall thickness & Defect size



Portable Digital Radiography Systems

NOVO DR Ltd. | Info@NOVO-DR.com | www.NOVO-DR.com
